

Canadian Survey September 2009



Photographs courtesy of Dave Reddin, DFO, Canada

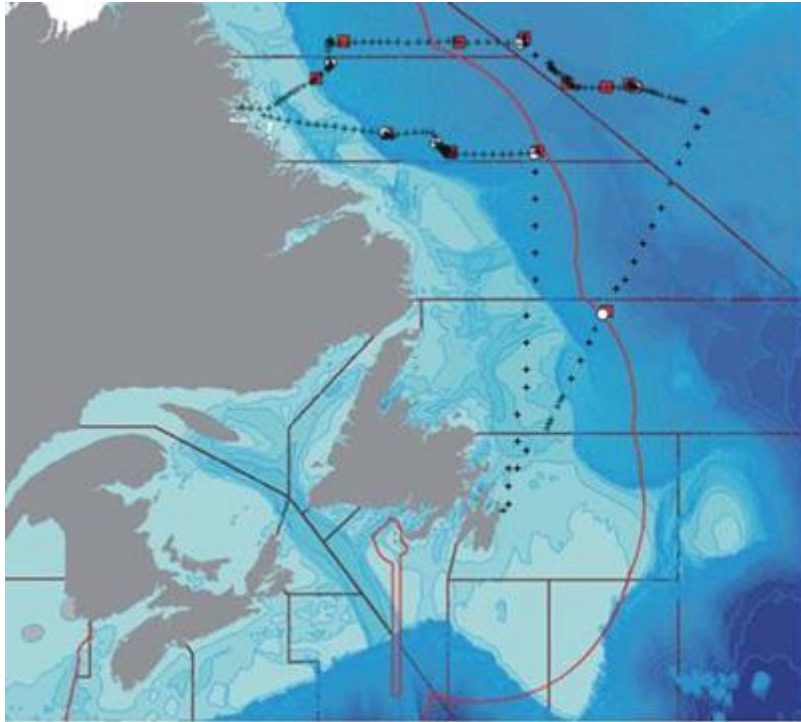


Dave.Reddin@dfo-mpo.gc.ca

During the period 7 – 30 September 2009 the CCGS Alfred Needler sampled the ecosystem components of the upper 20m of the water column in the Labrador Sea and off Southern Greenland between 55 – 58°N. In total, 21 sets were made in the Labrador Sea with surface gill nets and fourteen tows were made with a surface trawl, both with and without live capture aquarium fitted. No salmon post-smolts were caught during trawl tows without the aquarium. Two tows were made at night and 5 post-smolts were caught.

In total, 8 post-smolt salmon were caught by trawling and 84 salmon (61 post-smolts and 23 adults) were caught in the drift net sets. Eighty-five of these salmon were sampled for biological, morphometric and biochemical data. No salmon were caught in the colder water of the Labrador current.

In spite of very poor weather the objectives of the SALSEA programme were achieved and the material obtained will allow the characteristics, origin, age, health and diet of the salmon in the northern Labrador Sea area and its trophic relationships in the ecosystem to be defined.



The cruise track (+), gillnet stations (white circle), and trawl stations (red square) for Needler 912. Note that some gillnet stations are not visible as they overlap other stations.